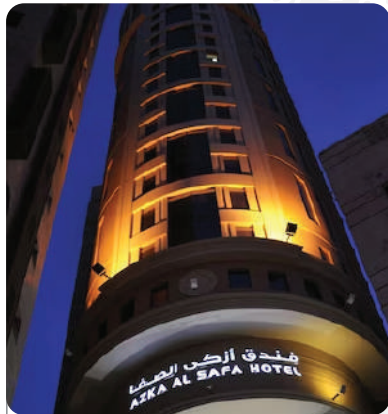




STARUMRAH RAMADAN PACKAGE

01th Ramadan to 15th
Ramadan 2024

OUR HOTELS (MAKKAH)



Azka Al Safwa



Marriott



Olyan Ajjad



Fairmount Clock Tower / Swissotel /
Maqam Royal Dar Al Eiman / Moevenpick
Hajar Tower / Pullmann Zamzam



Double Tree by Hilton



Voco



Tara Al Hijra



Mohagerin Hotel

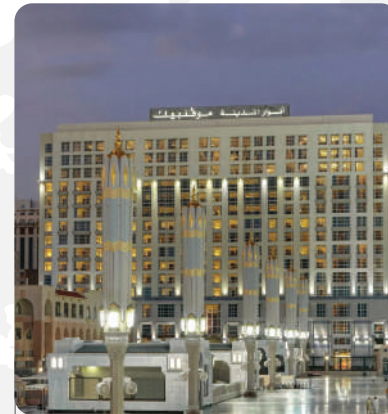
OUR HOTELS (MADINAH)



Gulnar Taiba



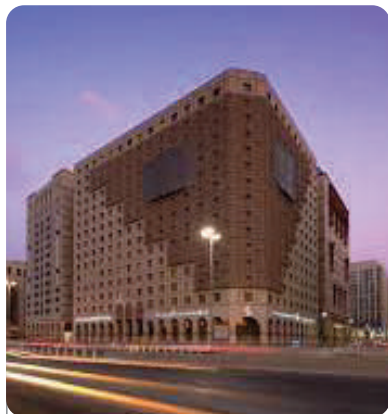
Leader Muna Kareem



Movenpick Anwar Al Madinah



Rua Al Hijra



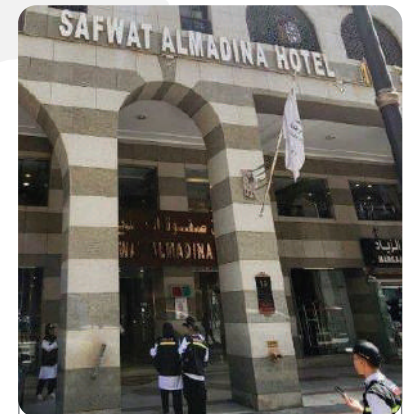
Saja Al Madinah



Louloat al Madinah



Badr al Maqam



Safwat al Madinah

MOVENPICK HAJAR (MAKKAH)

LEADER MUNA KAREEM/ ANWAR AL MADINAH MOVENPICK

DDM	MAKKAH NIGHTS	MADINAH NIGHTS	TOTAL NIGHTS	TOTAL DAYS (PER PERSON)	DOUBLE	SR	TRIPLE	SR	QUAD	SR
-1	3	3	06 NIGHTS & 07 NIGHTS	06 NIGHTS & 07 NIGHTS	SR: 6,200		SR: 4,850		SR: 4,250	
-2	5	4	09 NIGHTS & 10 NIGHTS	09 NIGHTS & 10 NIGHTS	SR: 9,250		SR: 7,200		SR: 6,250	
-3	7	5	12 NIGHTS & 13 NIGHTS	12 NIGHTS & 13 NIGHTS	SR: 12,300		SR: 9,550		SR: 8,250	
-4	6	8	14 NIGHTS & 15 NIGHTS	14 NIGHTS & 15 NIGHTS	SR: 12,450		SR: 9,650		SR: 8,350	

NOTE:

Room rates are quoted for normal view. Special view requirements will involve a surcharge. In case of normal view room not being available, special view surcharge will apply.

PACKAGE INCLUDE:

- One Way Transport By Private Car (Airport To Hotel)
- Visa Processing And Meet & Assist At Airport.
- The Package Amount Are Inclusive All Taxes (Vat & Municipality Fee), If Any Tax Charge By Saudi Govt. Then We Will Be Charge Separately.
- All Mak & Mad Hotel Based On Dbl Rooms. If There Is Triple Or Quad Room Sofa-cum bed Or Extra Bed Will Be Given In The Room.

STANDARD TIMING OF CHECK INN IS 17:00 HRS. AND CHECK OUT IS 14:00 HRS.

Both Hotels In Makkah & Madinah (Room Only) All Package Are Valid From Ramadan 2024

For further details visit www.universalexpress.com or Call: 021.111.786.747

SWISSOTEL/MAQAM (MAKKAH)

LEADER MUNA KAREEM/ ANWAR AL MADINAH MOVENPICK

DDM	MAKKAH NIGHTS	MADINAH NIGHTS	TOTAL NIGHTS	TOTAL DAYS (PER PERSON)	DOUBLE	SR	TRIPLE	SR	QUAD	SR
-1	3	3	06 NIGHTS & 07 NIGHTS	06 NIGHTS & 07 NIGHTS	SR: 6,100		SR: 4,750		SR: 4,150	
-2	5	4	09 NIGHTS & 10 NIGHTS	09 NIGHTS & 10 NIGHTS	SR: 9,100		SR: 7,000		SR: 6,050	
-3	7	5	12 NIGHTS & 13 NIGHTS	12 NIGHTS & 13 NIGHTS	SR: 12,100		SR: 9,250		SR: 7,950	
-4	6	8	14 NIGHTS & 15 NIGHTS	14 NIGHTS & 15 NIGHTS	SR: 12,300		SR: 9,400		SR: 8,100	

NOTE:

Room rates are quoted for normal view. Special view requirements will involve a surcharge. In case of normal view room not being available, special view surcharge will apply.

PACKAGE INCLUDE:

- One Way Transport By Private Car (Airport To Hotel)
- Visa Processing And Meet & Assist At Airport.
- The Package Amount Are Inclusive All Taxes (Vat & Municipality Fee), If Any Tax Charge By Saudi Govt. Then We Will Be Charge Separately.
- All Mak & Mad Hotel Based On Dbl Rooms. If There Is Triple Or Quad Room Sofa-cum Bed Or Extra Bed Will Be Given In The Room.

STANDARD TIMING OF CHECK INN IS 17:00 HRS. AND CHECK OUT IS 14:00 HRS.

Both Hotels In Makkah & Madinah (Room Only) All Package Are Valid From Ramadan 2024

For further details visit www.universalexpress.com or Call: 021.111.786.747

PULLMAN (MAKKAH)

LEADER MUNA KAREEM/ ANWAR AL MADINAH MOVENPICK

DDM -1	MAKKAH NIGHTS 3 MADINAH NIGHTS 3	06 NIGHTS & 07 NIGHTS TOTAL DAYS (PER PERSON)	DDM -2	MAKKAH NIGHTS 5 MADINAH NIGHTS 4	09 NIGHTS & 10 NIGHTS TOTAL DAYS (PER PERSON)	DDM -3	MAKKAH NIGHTS 7 MADINAH NIGHTS 5	12 NIGHTS & 13 NIGHTS TOTAL DAYS (PER PERSON)	DDM -4	MAKKAH NIGHTS 6 MADINAH NIGHTS 8	14 NIGHTS & 15 NIGHTS TOTAL DAYS (PER PERSON)
	DOUBLE	SR: 5,950		DOUBLE	SR: 8,800		DOUBLE	SR: 11,700		DOUBLE	SR: 11,900
	TRIPLE	SR: 4,650		TRIPLE	SR: 6,800		TRIPLE	SR: 9,000		TRIPLE	SR: 9,200
	QUAD	SR: 4,050		QUAD	SR: 5,900		QUAD	SR: 7,750		QUAD	SR: 7,950

NOTE:

Room rates are quoted for normal view. Special view requirements will involve a surcharge. In case of normal view room not being available, special view surcharge will apply.

PACKAGE INCLUDE:

- One Way Transport By Private Car (Airport To Hotel)
- Visa Processing And Meet & Assist At Airport.
- The Package Amount Are Inclusive All Taxes (Vat & Municipality Fee), If Any Tax Charge By Saudi Govt. Then We Will Be Charge Separately.
- All Mak & Mad Hotel Based On Dbl Rooms. If There Is Triple Or Quad Room Sofa-cum Bed Or Extra Bed Will Be Given In The Room.

STANDARD TIMING OF CHECK INN IS 17:00 HRS. AND CHECK OUT IS 14:00 HRS.

Both Hotels In Makkah & Madinah (Room Only) All Package Are Valid From Ramadan 2024

For further details visit www.universalexpress.com or Call: 021.111.786.747

ROYAL DAR AL EIMAN (MAKKAH)

LEADER MUNA KAREEM/ ANWAR AL MADINAH MOVENPICK

DDM	MAKKAH NIGHTS	MADINAH NIGHTS	TOTAL NIGHTS	TOTAL DAYS (PER PERSON)	DOUBLE	SR	TRIPLE	SR	QUAD	SR
-1	3	3	06 NIGHTS & 07 NIGHTS	06 NIGHTS & 07 NIGHTS	SR: 5,650	SR: 4,450	SR: 3,950			
-2	5	4	09 NIGHTS & 10 NIGHTS	09 NIGHTS & 10 NIGHTS	SR: 8,350	SR: 6,550	SR: 5,700			
-3	7	5	12 NIGHTS & 13 NIGHTS	12 NIGHTS & 13 NIGHTS	SR: 11,050	SR: 8,600	SR: 7,450			
-4	6	8	14 NIGHTS & 15 NIGHTS	14 NIGHTS & 15 NIGHTS	SR: 11,450	SR: 8,850	SR: 7,700			

NOTE:

Room rates are quoted for normal view. Special view requirements will involve a surcharge. In case of normal view room not being available, special view surcharge will apply.

PACKAGE INCLUDE:

- One Way Transport By Private Car (Airport To Hotel)
- Visa Processing And Meet & Assist At Airport.
- The Package Amount Are Inclusive All Taxes (Vat & Municipality Fee), If Any Tax Charge By Saudi Govt. Then We Will Be Charge Separately.
- All Mak & Mad Hotel Based On Dbl Rooms. If There Is Triple Or Quad Room Sofa-cum Bed Or Extra Bed Will Be Given In The Room.

STANDARD TIMING OF CHECK INN IS 17:00 HRS. AND CHECK OUT IS 14:00 HRS.

Both Hotels In Makkah & Madinah (Room Only) All Package Are Valid From Ramadan 2024

For further details visit www.universalexpress.com or Call: 021.111.786.747

AZKA AL SAFA/ OLAYAN AJYAD (MAKKAH)

SAJA AL MADINAH/ RUA AL HIJRAH (MADINAH)

DDM	MAKKAH NIGHTS	MADINAH NIGHTS	TOTAL NIGHTS	TOTAL DAYS (PER PERSON)	DOUBLE	SR	TRIPLE	SR	QUAD	SR
-1	3	3	06 NIGHTS & 07 NIGHTS	06 NIGHTS & 07 NIGHTS	SR: 4,700	SR: 3,500	SR: 3,050			
-2	5	4	09 NIGHTS & 10 NIGHTS	09 NIGHTS & 10 NIGHTS	SR: 6,850	SR: 5,150	SR: 4,350			
-3	7	5	12 NIGHTS & 13 NIGHTS	12 NIGHTS & 13 NIGHTS	SR: 9,050	SR: 6,750	SR: 5,600			
-4	6	8	14 NIGHTS & 15 NIGHTS	14 NIGHTS & 15 NIGHTS	SR: 9,350	SR: 6,950	SR: 5,800			

NOTE:

Room rates are quoted for normal view. Special view requirements will involve a surcharge. In case of normal view room not being available, special view surcharge will apply.

PACKAGE INCLUDE:

- One Way Transport By Private Car (Airport To Hotel)
- Visa Processing And Meet & Assist At Airport.
- The Package Amount Are Inclusive All Taxes (Vat & Municipality Fee), If Any Tax Charge By Saudi Govt. Then We Will Be Charge Separately.
- All Mak & Mad Hotel Based On Dbl Rooms. If There Is Triple Or Quad Room Sofa-cum Bed Or Extra Bed Will Be Given In The Room.

STANDARD TIMING OF CHECK INN IS 17:00 HRS. AND CHECK OUT IS 14:00 HRS.

Both Hotels In Makkah & Madinah (Room Only) All Package Are Valid From Ramadan 2024

For further details visit www.universalexpress.com or Call: 021.111.786.747

TARA AL HIJRA HOTEL / MOHAJREEN (MAKKAH)

LOLOAT AL MADINAH/ BIR AL EIMAN (MADINAH)

DDM -1	<p>MAKKAH NIGHTS 3 MADINAH NIGHTS 3</p> <p>06 NIGHTS & 07 NIGHTS</p> <p>TOTAL DAYS (PER PERSON)</p> <table border="1"> <tr> <td>DOUBLE</td> <td>SR: 2,600</td> </tr> <tr> <td>TRIPLE</td> <td>SR: 2,050</td> </tr> <tr> <td>QUAD</td> <td>SR: 1,850</td> </tr> </table>	DOUBLE	SR: 2,600	TRIPLE	SR: 2,050	QUAD	SR: 1,850	DDM -2	<p>MAKKAH NIGHTS 5 MADINAH NIGHTS 4</p> <p>09 NIGHTS & 10 NIGHTS</p> <p>TOTAL DAYS (PER PERSON)</p> <table border="1"> <tr> <td>DOUBLE</td> <td>SR: 3,550</td> </tr> <tr> <td>TRIPLE</td> <td>SR: 2,750</td> </tr> <tr> <td>QUAD</td> <td>SR: 2,400</td> </tr> </table>	DOUBLE	SR: 3,550	TRIPLE	SR: 2,750	QUAD	SR: 2,400	DDM -3	<p>MAKKAH NIGHTS 7 MADINAH NIGHTS 5</p> <p>12 NIGHTS & 13 NIGHTS</p> <p>TOTAL DAYS (PER PERSON)</p> <table border="1"> <tr> <td>DOUBLE</td> <td>SR: 4,450</td> </tr> <tr> <td>TRIPLE</td> <td>SR: 3,450</td> </tr> <tr> <td>QUAD</td> <td>SR: 3,000</td> </tr> </table>	DOUBLE	SR: 4,450	TRIPLE	SR: 3,450	QUAD	SR: 3,000	DDM -4	<p>MAKKAH NIGHTS 6 MADINAH NIGHTS 8</p> <p>14 NIGHTS & 15 NIGHTS</p> <p>TOTAL DAYS (PER PERSON)</p> <table border="1"> <tr> <td>DOUBLE</td> <td>SR: 4,800</td> </tr> <tr> <td>TRIPLE</td> <td>SR: 3,650</td> </tr> <tr> <td>QUAD</td> <td>SR: 3,100</td> </tr> </table>	DOUBLE	SR: 4,800	TRIPLE	SR: 3,650	QUAD	SR: 3,100
DOUBLE	SR: 2,600																														
TRIPLE	SR: 2,050																														
QUAD	SR: 1,850																														
DOUBLE	SR: 3,550																														
TRIPLE	SR: 2,750																														
QUAD	SR: 2,400																														
DOUBLE	SR: 4,450																														
TRIPLE	SR: 3,450																														
QUAD	SR: 3,000																														
DOUBLE	SR: 4,800																														
TRIPLE	SR: 3,650																														
QUAD	SR: 3,100																														

NOTE:

Room rates are quoted for normal view. Special view requirements will involve a surcharge. In case of normal view room not being available, special view surcharge will apply.

PACKAGE INCLUDE:

- One Way Transport By Private Car (Airport To Hotel)
- Visa Processing And Meet & Assist At Airport.
- The Package Amount Are Inclusive All Taxes (Vat & Municipality Fee), If Any Tax Charge By Saudi Govt. Then We Will Be Charge Separately.
- All Mak & Mad Hotel Based On Dbl Rooms. If There Is Triple Or Quad Room Sofa-cum Bed Or Extra Bed Will Be Given In The Room.

STANDARD TIMING OF CHECK INN IS 17:00 HRS. AND CHECK OUT IS 14:00 HRS.

Both Hotels In Makkah & Madinah (Room Only) All Package Are Valid From Ramadan 2024

For further details visit www.universalexpress.com or Call: 021.111.786.747

VOCO HOTEL (MAKKAH)

GRAND PLAZA/ SAFWAT(MADINAH)

DDM	MAKKAH NIGHTS	MADINAH NIGHTS	TOTAL NIGHTS	TOTAL DAYS (PER PERSON)	DOUBLE	SR	TRIPLE	SR	QUAD	SR
-1	3	3	06 NIGHTS & 07 NIGHTS	06	SR: 2,800		SR: 2,050		SR: 1,800	
-2	5	4	09 NIGHTS & 10 NIGHTS	09	SR: 3,700		SR: 2,700		SR: 2,250	
-3	7	5	12 NIGHTS & 13 NIGHTS	12	SR: 4,600		SR: 3,300		SR: 2,750	
-4	6	8	14 NIGHTS & 15 NIGHTS	14	SR: 5,350		SR: 3,800		SR: 3,150	

NOTE:

Room rates are quoted for normal view. Special view requirements will involve a surcharge. In case of normal view room not being available, special view surcharge will apply.

PACKAGE INCLUDE:

- One Way Transport By Private Car (Airport To Hotel)
- Visa Processing And Meet & Assist At Airport.
- The Package Amount Are Inclusive All Taxes (Vat & Municipality Fee), If Any Tax Charge By Saudi Govt. Then We Will Be Charge Separately.
- All Mak & Mad Hotel Based On Dbl Rooms. If There Is Triple Or Quad Room Sofa-cum Bed Or Extra Bed Will Be Given In The Room.

STANDARD TIMING OF CHECK INN IS 17:00 HRS. AND CHECK OUT IS 14:00 HRS.

Both Hotels In Makkah & Madinah (Room Only) All Package Are Valid From Ramadan 2024

For further details visit www.universalexpress.com or Call: 021.111.786.747

TRANSPORT RATES FOR UMRAH SEASON 1445H 01-RAMADAN TO 15-RAMADAN 2024

ROUTES CAR	CAR	H1 HYUNDAI	GMC	GMC 21-22	HIACE	COASTER
Jeddah APT - To - Makkah Hotel	400	450	550	650	600	800
Makkah Hotel - To - Jeddah APT	400	450	550	650	550	800
MAK - MED/ MED - MAK	700	900	1100	1600	1000	1400
MED APT - To – MED HTL	250	300	450	500	500	700
MED HTL -To - MED APT	250	300	450	500	400	500
MAK / MED Ziarat	300	400	500	600	500	700
MED TRAIN STN - To - MED HTL	300	300	350	400	400	500
MED HTL - To - MED TRAIN STN	300	300	350	400	350	500
MAK TRAIN STN - To - MAK HTL	300	300	350	400	400	500
MAK HTL - To - MAK TRAIN STN	300	300	350	400	350	500

We have arranged transportation for Ramadan at a very reasonable price, tailored to your convenience.